

# Specifications

## Available Acreage: 647

Located just one mile south of I-26 and 28 miles from Port of Charleston, the Ridgeville Industrial Campus is ideal for distribution and manufacturing users needing direct access to the Port. It is designated a Certified Site by Palmetto Sites and is Norfolk Southern Rail served.

## General

### STRATEGIC ADVANTAGES

- One mile from I-26
- 25 Miles from Boeing & Charleston International Airport
- 404 Wetlands Permit Complete
- Flexible Lot Sizes Accommodate from 25,000 SF to 1 Million + SF

### ZONING

- Industrial

## Utilities

### WATER

- Dorchester County Water & Sewer
- 12" Water Line

### GAS

- Dominion Energy
- 6" Gas Line

### SEWER

- Dorchester County Water & Sewer
- 12" Gravity Line

### ELECTRIC

- Dominion Energy & Edisto Electric Cooperative
- 230 kV Power Available

## Transportation Access

### INTERSTATE

- I-26, 1 Mile
- I-95, 19.2 Miles

### US HIGHWAYS

- US Highway 78, Frontage

### AIRPORT

- Charleston International Airport, 25 Miles

### PORT

- Port of Charleston, 28 Miles

### RAIL

- Norfolk Southern Main Line



# Ridgeville INDUSTRIAL CAMPUS

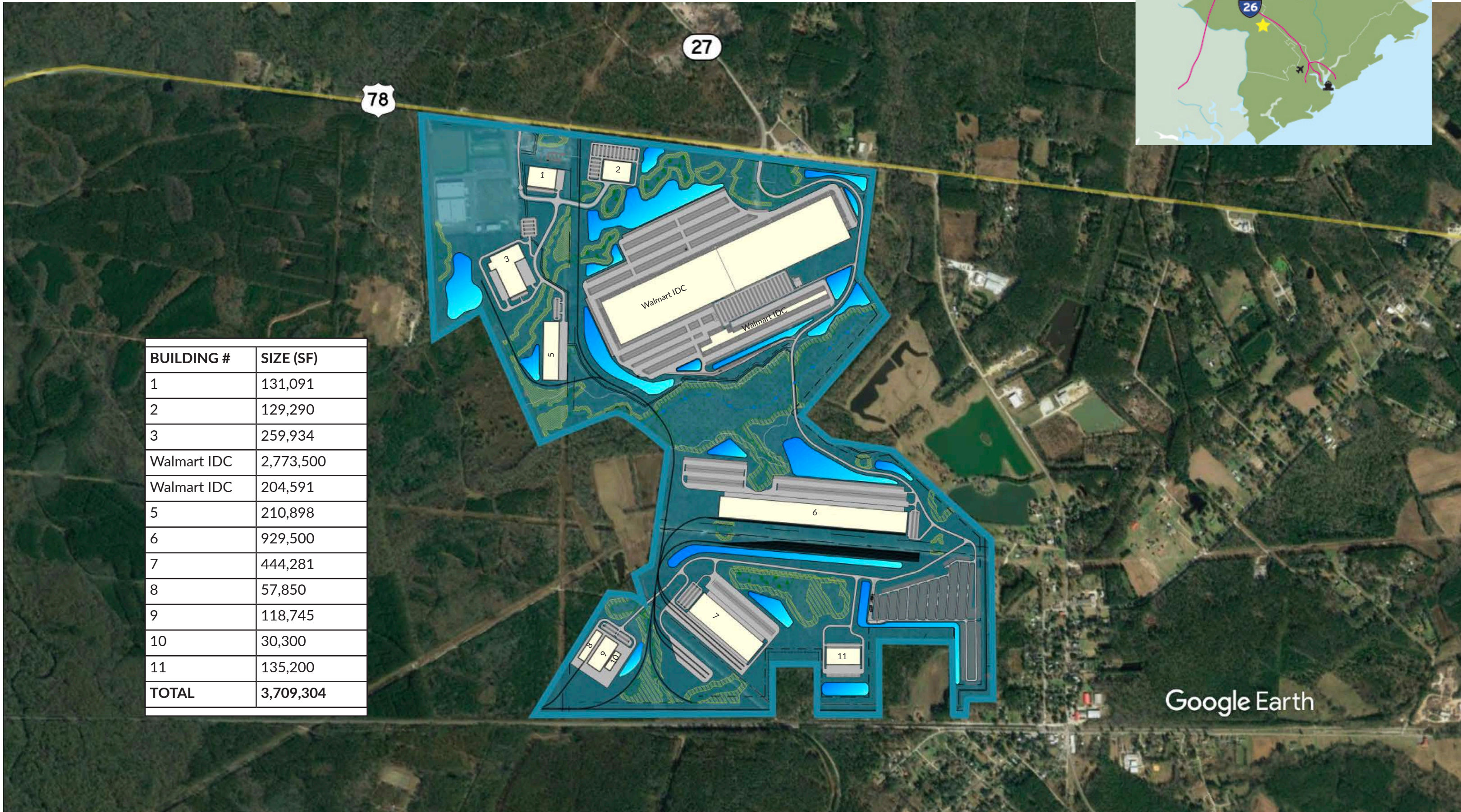
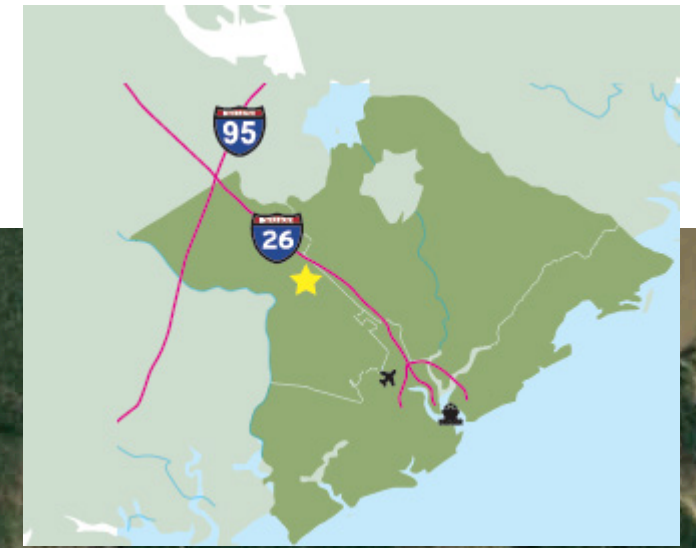


**Dorchester County**  
ECONOMIC DEVELOPMENT



402 N. Main Street | Summerville, SC 29483

Phone: (843) 875-9109 | Fax: (843) 821-9994 | Email: [info@DorchesterForBusiness.com](mailto:info@DorchesterForBusiness.com)



BUILDING #	SIZE (SF)
1	131,091
2	129,290
3	259,934
Walmart IDC	2,773,500
Walmart IDC	204,591
5	210,898
6	929,500
7	444,281
8	57,850
9	118,745
10	30,300
11	135,200
<b>TOTAL</b>	<b>3,709,304</b>